

MONTHLY MEMBERSHIP PROGRESS REPORT

LOCATION INDIA

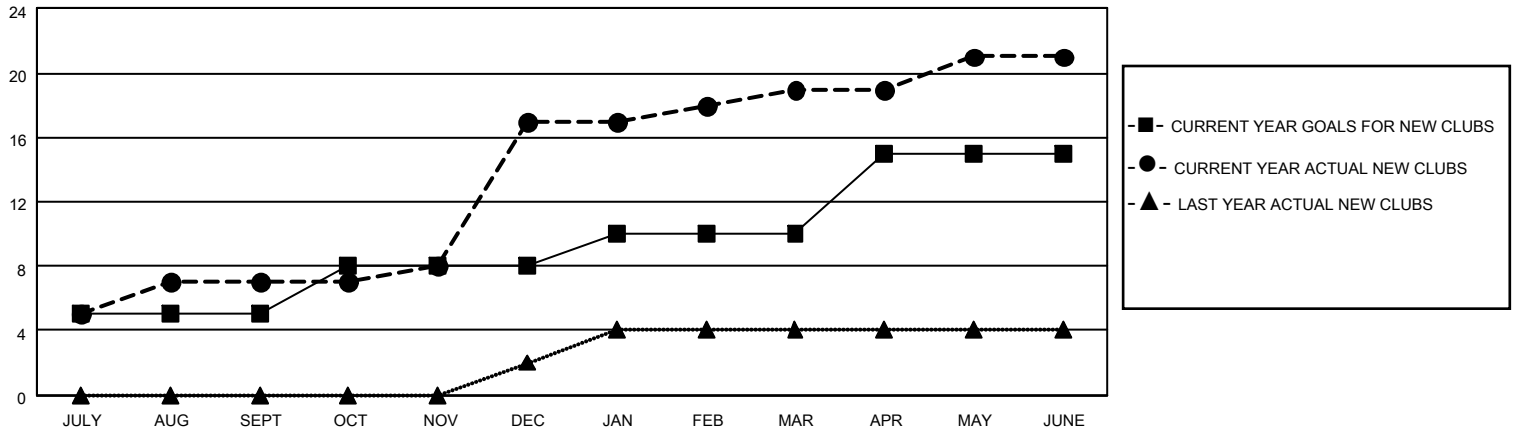
District 318 D

Results as of: 6/30/2021

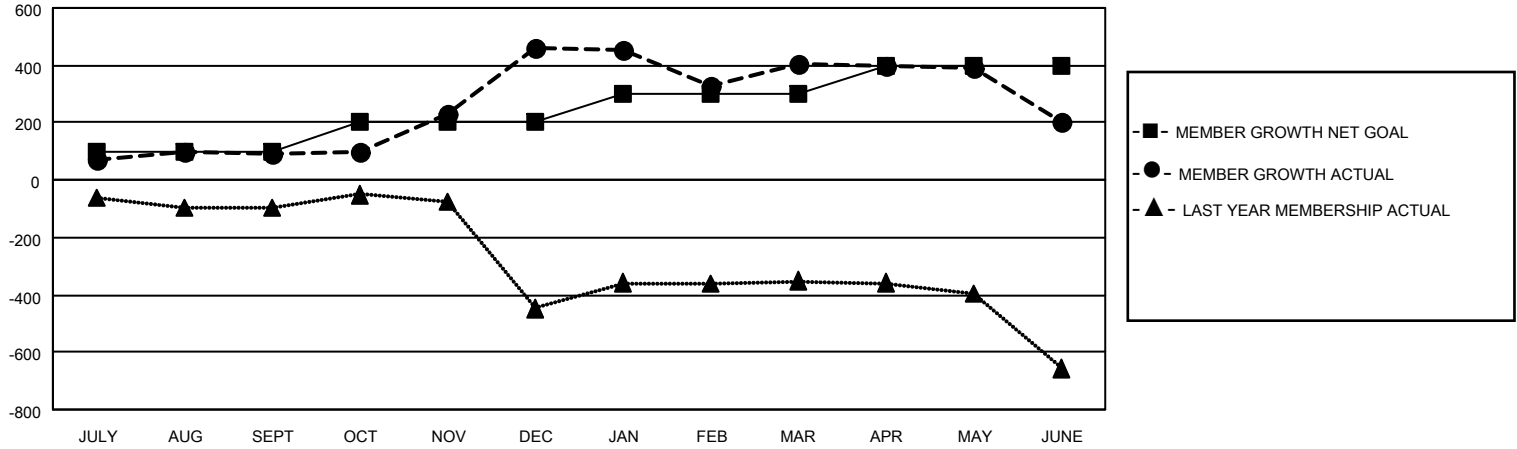
Clubs			
RESULTS FOR 2020-2021			
QUARTER	NEW CLUB GOAL	NEW CLUBS	DROPPED CLUBS
JULY/AUG/SEPT	5	7	0
OCT/NOV/DEC	3	10	0
JAN/FEB/MAR	2	2	7
APR/MAY/JUNE	5	2	0

Members			
RESULTS FOR 2020-2021			
QUARTER	MEMBER GROWTH NET GOAL	MEMBER GROWTH ACTUAL	DROPPED MEMBERS ACTUAL (including transfers)
JULY/AUG/SEPT	100	284	180
OCT/NOV/DEC	100	531	150
JAN/FEB/MAR	100	137	174
APR/MAY/JUNE	100	188	376

GOALS AND ACTUAL NEW CLUBS CUMULATIVE



GOALS AND ACTUAL MEMBERS CUMULATIVE



DROPPED CLUBS: 7

122 CLUBS OF 177 ADDED 1 OR MORE NEW MEMBERS

<u>GENDER DISTRIBUTION</u>	
MALE	4,688 (83.03%)
FEMALE	958 (16.97%)

<u>DROPPED MEMBERS</u>	
DECEASED	34
CLUB CANCELLED	132
OTHER	714
TOTAL	880

[CLICK HERE FOR CUMULATIVE MEMBERSHIP DATA](#)

TOTAL FAMILY UNIT MEMBERS	1,689
FAMILY MEMBERS PAYING HALF DUES	900